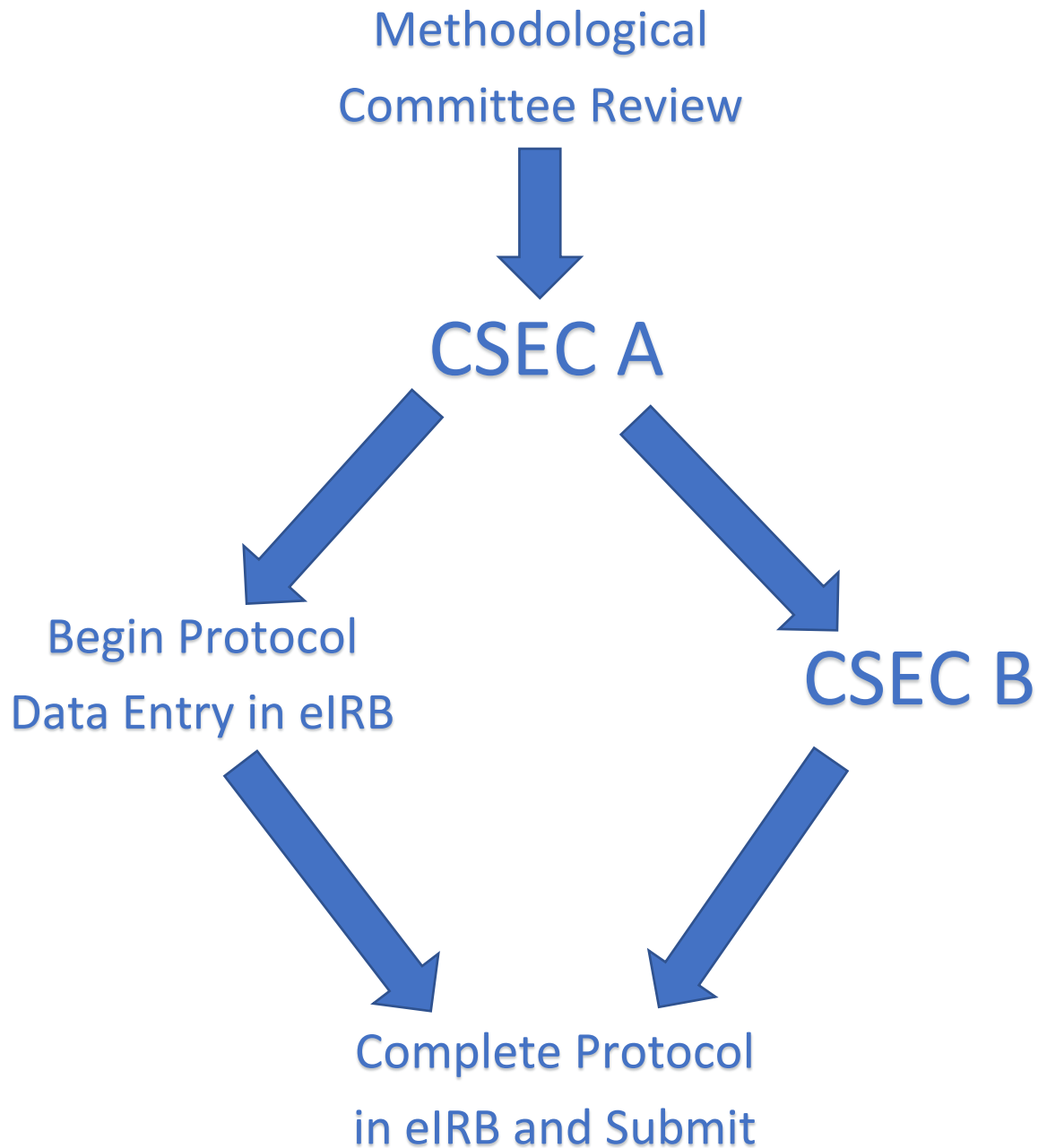


**Obtaining Research Approval:
An Overview of the Clinical Study Evaluation Committee
(CSEC) and Institutional Review Board (IRB) Process**



Notes:

1. WCCHR Affidavits are not part of a patient's medical record, however, data collected in WCCHR affidavits is considered "sensitive in nature".
2. WCCHR data is not protected by HIPPA and does not qualify as Protected Health Information (PHI).
3. WCCHR data does qualify as Personally Identifiable Information (PII).